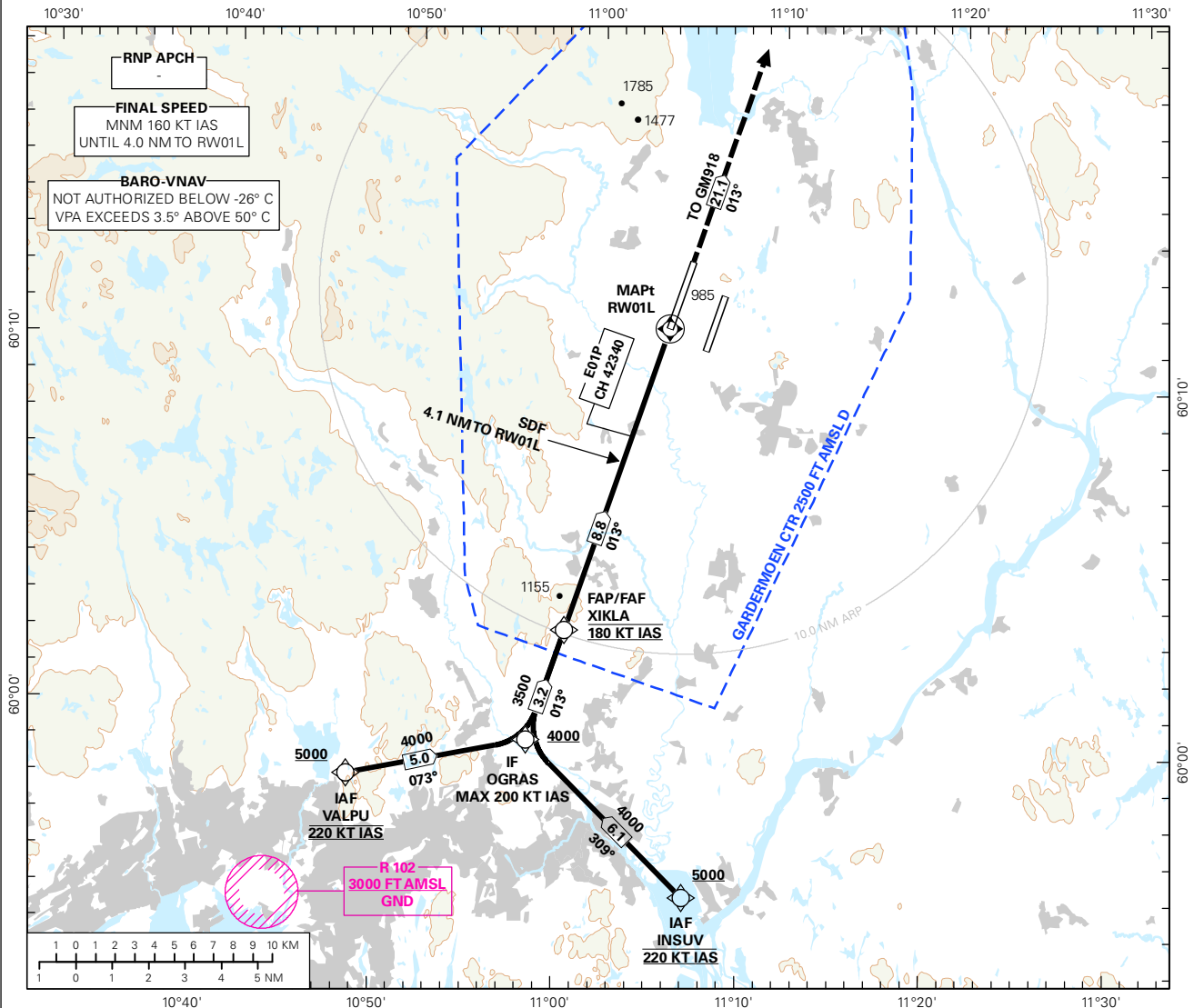
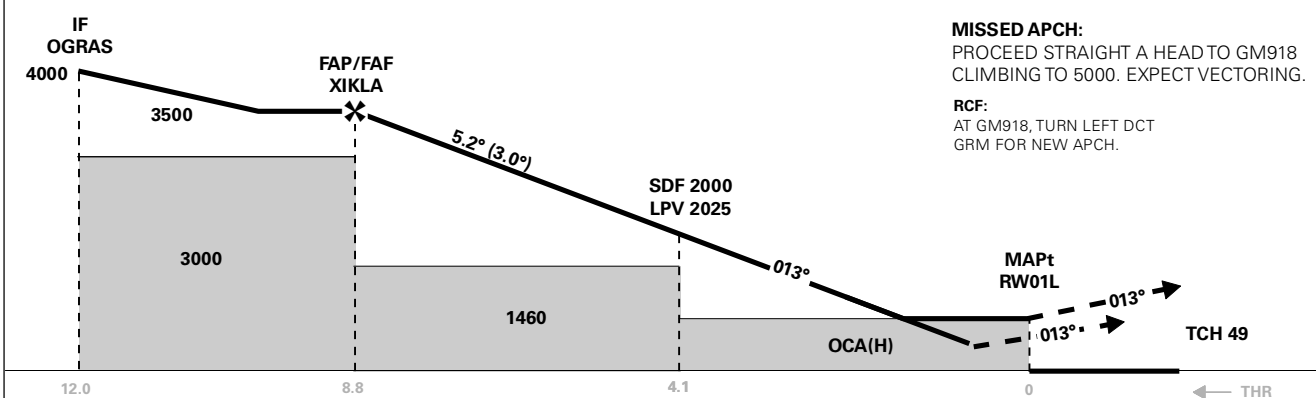


OSLO

GARDERMOEN
RNAV(GNSS) RWY 01L
TRANSITION ALTITUDE
7000



DIST TO RW01L	9	8	7	6	5	4	3	2
ALT (HGT)	-	3260 (2605)	2940 (2285)	2620 (1965)	2300 (1645)	1980 (1325)	1670 (1015)	1350 (695)



CAT OF ACFT		A	B	C	D	FINAL APCH	DIST FAF - MAPt: 8.8					
OCA(H) STRAIGHT - IN	LPV	870 (215)	880 (225)	890 (235)	900 (245)							
	LNAV/VNAV	1000 (345)	1010 (355)	1030 (375)	1150 (495)	SPEED	KT	70	90	120	150	180
	LNAV	1240 (585)				TIME	MIN:SEC	07:32	05:52	04:24	03:31	02:56
CIRCLING		1280 (599)		1920 (1239)	2230 (1549)	ROD	FT/MIN	370	480	635	795	955

NOTE: CIRCLING W OF RWY ONLY.

17 SEP 2015

CHANGES: SPEED RESTRICTIONS.

RECOMMENDED RNAV PROCEDURE CODING

ENGM RNAV(GNSS) RWY 01L										
Serial Number	Path Descriptor	Waypoint Identifier	Fly-over	Course °M(°T)	MAG VAR	DIST (NM)	Turn Dir	ALT (FT)	Speed (KT)	VPA/TCH
010	IF	VALPU	-	-	-	-	-	A5000+	K220	-
020	TF	OGRAS	-	073 (076.0)	-	5.0	-	A4000+	K200-	-
010	IF	INSUV	-	-	-	-	-	A5000+	K220	-
020	TF	OGRAS	-	309 (312.2)	-	6.1	-	A4000+	K200-	-
030	TF	XIKLA	-	013 (015.9)	-	3.2	-	A3500+	K180	-
040	TF	RW01L	Y	013 (016.0)	-	8.8	-	-	-	-3.0/15
050	TF	GM918	-	013 (016.0)	-	21.1	-	A5000	-	-

Note: Recommended RNAV procedure coding is based on ARINC 424-15 and is provided solely to indicate which procedure design protection areas were used in the Instrument Flight Procedure Design process.

Note: Published OCA(H) values are obstacle clearance values. Decision heights (DH) below 250 FT shall not be used due to APV approach operation Type A limitations.

FAS DATA BLOCK

Operation type	0	LTP/FTP ellipsoidal height	238.3
SBAS Provider	1	FPAP latitude	601301.9020N
Airport Identifier	ENGM	FPAP longitude	0110532.3330E
Runway	RW01L	Threshold crossing height	15
Approach performance designator	0	TCH units	M
Route Indicator	-	Glide path angle	3.0
Reference path data selector	0	Course width at threshold	105
Reference path Identifier	E01P	Length offset	136
LTP/FTP latitude	601106.0040N	Horizontal alert limit (HAL)	40
LTP/FTP longitude	0110425.4770E	Vertical alert limit (VAL)	50
		PRECISION APPROACH PATH CRC REMAINDER	905B8419

NON FAS DATA BLOCK FIELDS

LTP Ortometric Height	199.8
FPAP Ortometric Height	205.8